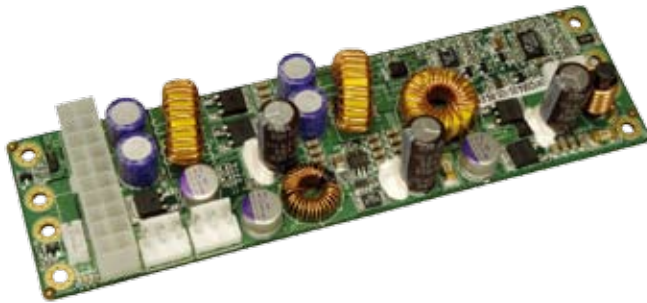
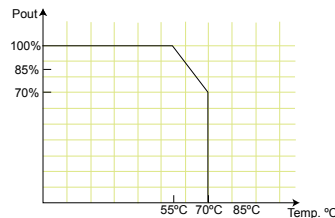


# IDD-9364120A 120 W DC/DC Converter Module



## Specifications

- Output (max.): 12 V@4 A, 5 V@10 A, 3.3 V@8 A, -12 V@0.3 A & 5 VSB@2 A  
Max. total output: 120 W
- Input: 9 VDC to 36 VDC
- Performance characteristics  
Noise & ripple: <240 mV  
Line regulation: <50 mV  
Load regulation: <100 mV  
Efficiency: Up to 90%
- Dimensions: 45 mm x 160 mm
- Weight: NW: 104 g
- Operating temperature: -20°C ~ 70°C



## PIN Assignments

### Input Power Connector

CN4	Pin 1	Pin 2	Pin 3	Pin 4
	VIN	VIN	GND	GND

### Output Power Connector

CN1 CN2	Pin 1	Pin 2	Pin 3
	+5 V	GND	+12 V

J1	Standard 20pins ATX		
----	---------------------	--	--

### ATX Mode Connector

CN3	Pin 1	Pin 2	Pin 3
	5 VSB	GND	PS_ON

## Wire Harness Selection Guide

### DC Input (CN4)

- Options 1.**  
**PN: CB-P1LP4-RS**  
Cable for FSP0601AD101C 60 W/ UP0451E12P 45 W/UP0251E12PL 25W AC-DC adapter
- Options 2.**  
**PN: CB-MD4P4-RS**  
Cable for 63000-FSP120AAB-RS 120 W AC-DC adapter
- Options 3.**  
**PN: CB-NOLP4-RS**  
Cable for terminal block

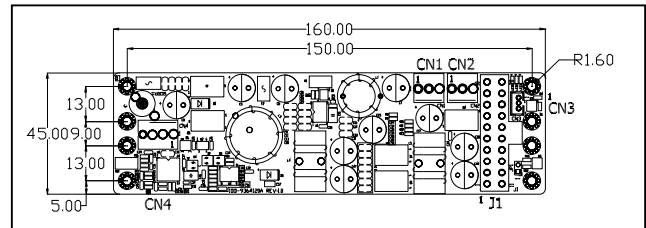
### SBC Main Power (J1)

- Options 1.**  
**PN: CB-ATX20P-RS**  
20-pin ATX to 20-pin s ATX cable

## Features

1. Wide input range: 9-36 VDC
2. AT or ATX mode on/off
3. Output voltage protection
4. Up to 90% efficiency
5. RoHS compliant
6. Compact size

## Dimensions (Millimeters)



## Packing information

- 1 x IDD-9364120A
- 1 x QIG

## Ordering Information

Part No.	Description
<b>IDD-9364120A-R10</b>	120 W DC/DC 9~36 V input; 12 V, 5 V, 3.3 V, -12 V & 5 VSB output
<b>CB-JST3PSW-RS</b>	30 cm cable on/off switch
<b>CB-JST3P001-RS</b>	30 cm 5 VSB, PS_ON wire to SBC
<b>CB-3PSATA-RS</b>	10 cm cable for SATA power
<b>CB-3PIIDE-RS</b>	10 cm cable for IDE HDD power
<b>CB-P1LP4-RS</b>	20 cm cable for FSP0601AD101C 60 W/ UP0451E12P 45 W/UP0251E12PL 25 W AC-DC adapter
<b>CB-MD4P4-RS</b>	20 cm cable for 63000-FSP120AAB-RS 120 W AC-DC adapter
<b>CB-NOLP4-RS</b>	20 cm cable for terminal block DC input
<b>CB-ATX20P-RS</b>	30 cm 20-pin ATX to 20-pin ATX cable

### I/O Power (CN1 & CN2)

- Options 1.**  
**PN: CB-3PSATA-RS**  
Cable for SATA
- Options 2.**  
**PN: CB-3PIIDE-RS**  
Cable for IDE HDD or any STD 4-pin I/O devices

### Power On/Off (CN3)

- Options 1.**  
**PN: CB-JST3PSW-RS**  
Cable with on/off switch
- Options 2.**  
**PN: CB-JST3P001-RS**  
Cable to SBC (5 VSB & PS\_ON)

- 1 Application Server Platform
- 2 Single Board Computer
- 3 IBX Series POS PC
- 4 AFOLUX POS Panel PC
- 5 Video Capture Card
- 6 KAMIO RISC
- 7 IOVU Open HMI
- 8 VITO Universal Controller
- 9 DINO BLADE
- 10 LCD Product Series
- 11 Embedded System
- 12 Industrial Computer Chassis
- 13 Power Supply
- 14 Peripherals