

# CPU Cooler

## High performance thermal solutions

### Pentium® 4 (Socket 478)



**CF-519-RS**  
High Performance Copper Core Socket 478 CPU Cooler, RoHS

	CF-478A-RS
Dimensions (D x W x H) (mm)	92x92x67
Material	Cu
Bearing Type	Two Ball
Capability (Watt)	80W
Fan speed (RPM)	2200
Noise level (dBA)	24
Life expectancy (hrs)	50000
G.W. (g)	310

### Pentium® M (Socket 479)



**CF-518-RS**  
High Performance Pentium-M CPU Cooler, RoHS

	CF-518-RS
Dimensions (D x W x H) (mm)	60x60x26
Material	Aluminum Alloy
Bearing Type	Two ball
Capability (Watt)	20W
Fan speed (RPM)	5000
Noise level (dBA)	36.1
Life expectancy (hrs)	50000
G.W. (g)	116

### Pentium® 4-M



**CF-515**  
High Performance Skiving Pentium 4-M CPU Cooler

	CF-515
Dimensions (D x W x H) (mm)	62x62x37
Material	Aluminum Alloy
Bearing Type	Two ball
Fan speed (RPM)	4500
Noise level (dBA)	36
Life expectancy (hrs)	40000
G.W. (g)	196

### Pentium® 3 (Socket 370)



**40W**  
**CF-370A-RS**  
High Performance Slim Type Socket 370 CPU Cooler, RoHS

	CF-370A-RS
Dimensions (D x W x H) (mm)	50x52x20
Material	Cu-Al
Bearing Type	Two ball
Capability (Watt)	40W
Fan speed (RPM)	5500
Noise level (dBA)	32.1
Life expectancy (hrs)	40000
G.W. (g)	62

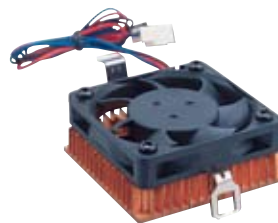
### Pentium® M (Socket 479)



**86W**  
**CF-479A-RS**  
High Performance Socket-479 Pentium M CPU Cooler, RoHS

	CF-479A-RS
Dimensions (D x W x H) (mm)	60x60x39.5
Material	Al
Bearing Type	Two ball
Capability (Watt)	86W
Fan speed (RPM)	4800
Noise level (dBA)	37
Life expectancy (hrs)	40000
G.W. (g)	145

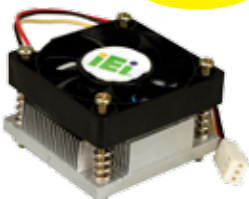
### Pentium® 3 (Socket 370)



**CF-504-RS**  
Slim Type Copper Socket-370 CPU Cooler, RoHS

	CF-504-RS
Dimensions (D x W x H) (mm)	51x50x20
Material	Cu
Bearing Type	Two ball
Capability (Watt)	21.4W
Fan speed (RPM)	5500
Noise level (dBA)	30
Life expectancy (hrs)	70000
G.W. (g)	160

### Pentium® M (Socket 479)



**50W**  
**CF-479B-R10**  
High Performance Socket-479 Pentium M CPU Cooler, RoHS

	CF-479B-RS
Dimensions (D x W x H) (mm)	50x50x26
Material	Al
Bearing Type	Two ball
Capability (Watt)	50W
Fan speed (RPM)	6000
Noise level (dBA)	39
Life expectancy (hrs)	40000
G.W. (g)	86

### Pentium® 3 (Socket 370)



**CF-507-RS**  
Socket 478 Retention kit full metal material, RoHS

	CF-507-RS
Dimensions (D x W x H) (mm)	53x51x25.5
Material	Cu
Bearing Type	One ball
Capability (Watt)	21.4W
Fan speed (RPM)	4500
Noise level (dBA)	32.5
Life expectancy (hrs)	50000
G.W. (g)	160