

IDDV-6304140A *140 W DC/DC Smart ATX Converter Module for Vehicle*

1
Application
Server
Platform

2
Single
Board
Computer

3
IBX Series
POS PC

4
AFOLUX
POS
Panel PC

5
Video
Capture
Card

6
KAMIO
RISC

7
IOVU
Open HMI

8
VITO
Universal
Controller

9
DINO
BLADE

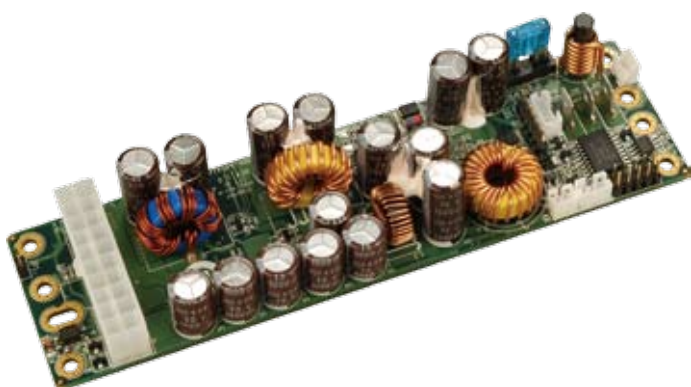
10
LCD
Product
Series

11
Embedded
System

12
Industrial
Computer
Chassis

13
Power
Supply

14
Peripherals



Dedicated ATX Power for Car PC and Battery Powered Applications

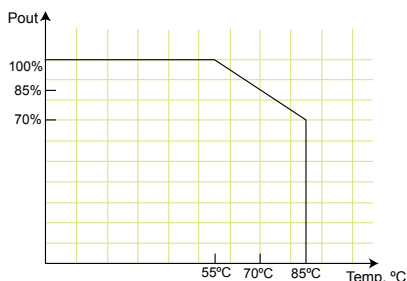
Designed to provide power and to control the on/off switch of a motherboard based on the ignition status.

Features

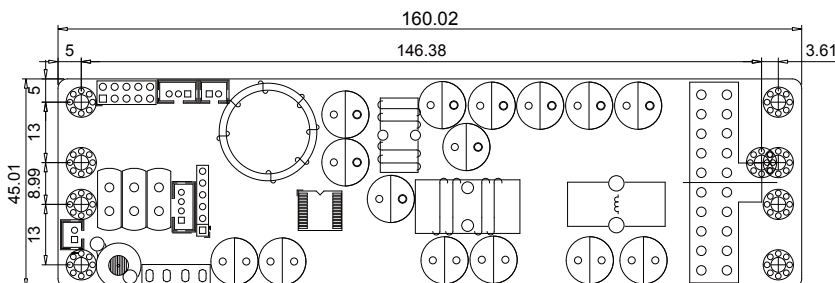
1. Wide input range: 6-30 VDC
2. Smart system on/off control
3. 6 selectable power on/off timing modes
4. Load down protection
5. Over voltage protection
6. Short circuit protection
7. Over current protection
8. Battery voltage monitor
9. Amplifier on-delay control
10. RoHS compliant
11. Compact size
12. IrDA remote control off (options)

Specifications

- Output (max.): 5 V@10 A, 3.3 V@10 A, 12 V@4 A, -12 V@0.15 A & 5 VSB@1.5 A
- Max. total output: 140 W
- Input: 6 VDC to 30 VDC
Min. input operating voltage: 5.7 V
Max. input operating voltage: 30 V
- Deep-discharge shut down voltage: 10.6 V
- Startup voltage: 8 V
- Efficiency: up to 90%
- Dimensions: 45 mm X 160 mm
- Weight: NW: 118 g
- Operating temperature: -20°C ~ 85°C
- Storage temperature: -40°C ~ 125°C



Dimensions (Millimeters)



PIN Assignments

Input Power Connector

| | |
|------|----------|
| CN15 | Batt (+) |
| CN16 | ACC ON |
| CN17 | Batt (-) |

Output Power Connector

| | |
|----|---------------------|
| J1 | Standard 20-pin ATX |
|----|---------------------|

Wire Harness Selection Guide

SBC Main Power (J1)



PN: CB-ATX20PIO-RS
20-pin ATX to 20-pin ATX / SATA / HDD cables

Input Power Connector (CN15, 16, 17)



PN: CB-BATACC-RS
Wire to battery and ACC on

Packing information

- 1 x IDDV-6304140A
- 1 x QIG
- 1 x Wire cable for PWR/SW AND MB/SW (P/N: 32100-153400-RS)
- 1 x Wire cable for LED /AMP (P/N: 32100-153500-RS)

Ordering Information

| Part No. | Description |
|-------------------|---|
| IDDV-6304140A-R10 | 140 W DC/DC 6-30 VDC input; vehicle converter module |
| CB-ATX20PIO-RS | 30 cm, 20-pin ATX to 20-pin ATX / SATA (20 cm) / HDD cables |
| CB-BATACC-RS | 30 cm, wire to battery and ACC on |