

AFL2-W21A-H61 **New**

Intel® Core™ i7/i5/i3 and Pentium® Processor

IEI designed a completely new model for its new AFOLUX GEN II Panel PCs. AFL2-W21A-H61 with exclusive LED light bar function combining

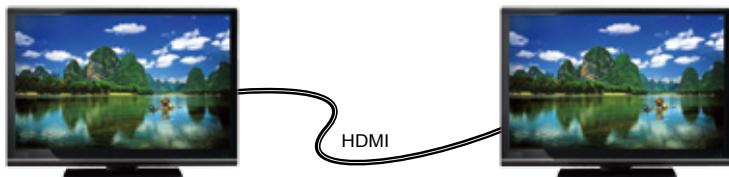
Features

- Two 204-pin DDR3 SO-DIMM slot (system max. 16GB) pre-installed with 4GB (2GB x 2)
- Projected capacitive touchscreen supported
- Wi-Fi 802.11b/g/n 2T2R high speed wireless
- EM or Mifare RFID reader
- Programmable colorful LED light bar
- Built-in two 3W speakers and microphone
- Auto dimming control
- Light fanless design
- Wide range 9~36 VDC input



Full HD Second Display Through HDMI Interface

Full-HD 1080p (1920x1080) reacts the resolution of panel, which is a set of high-definition video modes with 1920 of horizontal resolution and 1080 of vertical resolution. Widescreen aspect ratio of 16:9 supports perfect display sight, with brighter digital display.



1920 lines of horizontal resolution supporting a 16:9 ratio to perform perfect display sight.

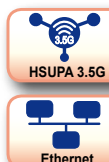
IEI Customized Expansion

Standard Connector Type Easy to Design Expansion Module

The AFL2-W21A-H61 can customize the expansion board depending on user's necessary. Customer can choose digital TV, 3G, video capturing...and so on.

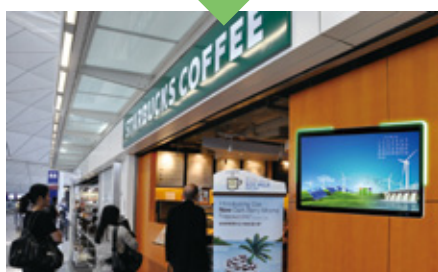
Features

- Reliable board to board connection
- IEI provides ODM service which customize boards of user's demand.



Use one system in different markets!

Digital TV



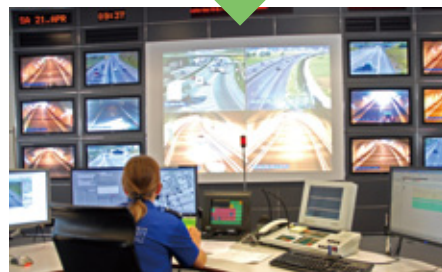
Kiosk System

3G/3.75G



Mobile Broadcasting System

4-Port Video Capture

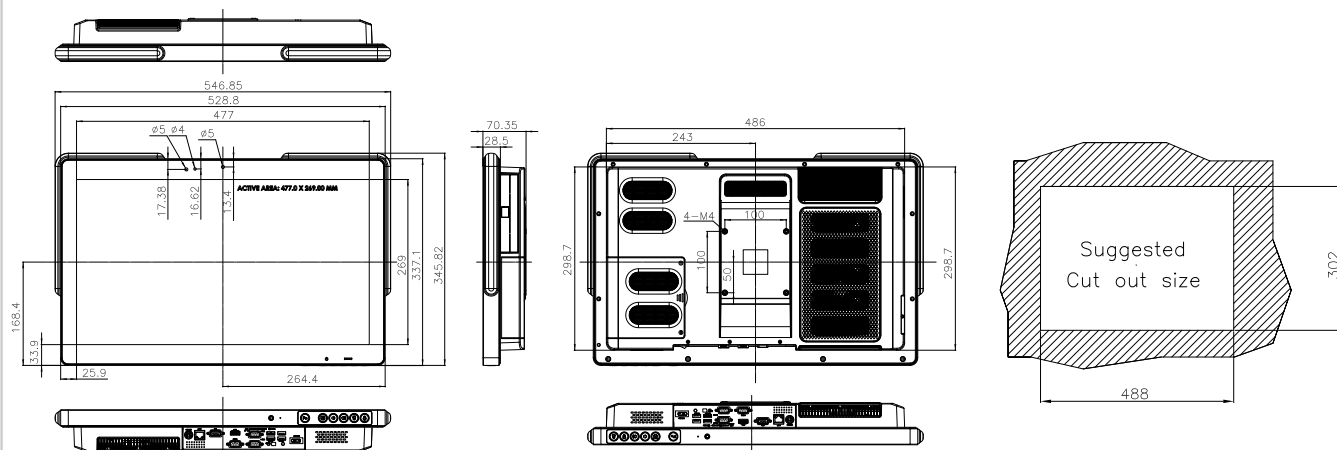


Surveillance System

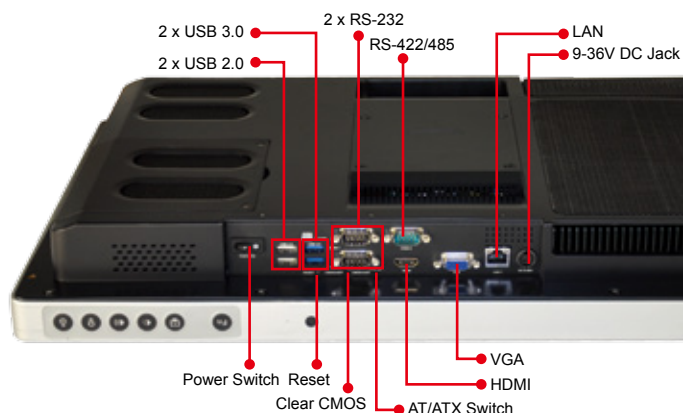
Specifications

| Model | | AFL2-W21A-H61 | | | |
|--------------------|--|---|--|--|--|
| LCD Specifications | LCD Display | W21.5" (16:9) | | | |
| | Max Resolution | 1920 (W) x 1080 (H) | | | |
| | Brightness (cd/m2) | 250 | | | |
| | Contrast Ratio | 1000 : 1 | | | |
| | LCD Color | 16.7M | | | |
| | Pixel Pitch (mm) | 0.24825 mm x 0.24825 mm | | | |
| | Viewing Angle (H-V) | 170° / 160° | | | |
| Touch | Backlight MTBF (Hrs) | 30000 (LED backlight) | | | |
| | Touch Screen | projected capacitive type with USB interface | | | |
| System | Touch Controller | EETI EXC7200 & EXC5404 | | | |
| | CPU | Intel® Core™ i7/i5/i3 and Pentium® processors | | | |
| | Chipset | Intel® H61 | | | |
| | RAM | Support two 204-pin DDR3 SO-DIMM slot (max. 16GB) preinstalled with 4GB (2GB x 2) | | | |
| | Storage | 1 x 2.5" SATA 3Gb/s HDD Bay | | | |
| | Optical Drive | 1 x Slim Type DVD-ROM bay | | | |
| | Ethernet | Realtek RTL8111E PCIe GbE controller supporting ASF 2.0 | | | |
| | Audio Codec | Realtek ALC892 HD Audio codec | | | |
| | Audio | Amplifier 3W + 3W | | | |
| | Webcam & Microphone | 2-megapixel camera with low light function Digital Microphone | | | |
| | I/O Ports | | 2 x RS232 (DB9 Connector) 1 x RS422/485 COM Port (DB9 connector) 2 x GbE LAN (RJ-45 connector) 3 x USB 2.0 2 x USB 3.0 1 x HDMI 1 x VGA port (DB-15 Connector) 1 x Power switch 1 x Reset button 1 x AT/ATX switch 1 x Clear CMOS button 1 x Type K 1 x 9~36V DC jack 1 x Line out 1 x Mic | | |
| | | Expansion Interface | 1 x PCIe Mini for Wi-Fi Module 1 x PCIe Mini reserved | | |
| | | Cooling System | Light Fanless | | |
| | | Other Features | EM and Mifare RFID | Optional: EM 125 KHz or Mifare 13.56 MHz card reader | |
| | | | LED Light Bar | Programmable R/G/B colorful LED light bar (SMBus Control) | |
| | | | Function Key | 6 x function keys: Key1 Backlight On/Off Key2 Audio - Key3 Audio + Key4 Brightness - Key5 Brightness+ Key6 Fn Combinations: Fn+Key1 RFID Enable/Disable Fn+Key2 Audio Mute Fn+Key3 Camera Enable/Disable Fn+Key5 Power ON/OFF | |
| | | | Infrared | IR receiver 38KHz | |
| | | | Light Sensor | Ambient light sensor for panel brightness adjustment | |
| | | | TPM | Reserved by pin-header | |
| OS Support | | | OS Support Windows Embedded Standard 7 Windows XP Embedded, Debian 6.0 Backports | | |
| Connectivity | Wireless | | IEEE 802.11b/g/n 2T2R module (WIFI-RT5392-SB-R10) | | |
| | Bluetooth | | Bluetooth V2.0+EDR with USB interface (optional) | | |
| Physical | Construction Material | | PC + ABS plastic for front cover and rear cover | | |
| | Mounting | Wall, Stand and VESA 100 mm x 100mm | | | |
| | Enclosure Color | Silver + Black | | | |
| | Dimension (mm) | 546.85 (W) x 345.82 (H) x 70.35 (D) | | | |
| Environment | Weight (Net/Gross) | 8.27 Kg / 11.27 Kg | | | |
| | Operating Temperature (with air flow) | -10°C ~ 50°C | | | |
| | Storage Temperature | -20°C ~ 60°C | | | |
| | Humidity | 10% to 90% (non-condensing) | | | |
| Power | IP Level | IP 64 compliant front panel | | | |
| | Safety and EMC | CE & FCC | | | |
| | Power Adapter | 120W power adapter Input: 100 V AC ~ 240 V AC, 50 / 60Hz, Output: 19 V DC | | | |
| | Power Input | 9 ~ 36V DC-IN | | | |
| Power Consumption | 19V@3.82A (Intel® Core™ i3-2120T processor with 4GB DDR3 memory) | | | | |

AFL2-W21A-H61
Dimensions (Unit: mm)



Rich I/O Interface



- Fn
- Backlight On/Off
- Audio -
- Audio +
- Brightness -
- Brightness +
- RFID Enable/Disable
- Audio Mute
- Camera Enable/Disable
- Power On / Off

Options

| Item | AFL2-W21A-H61 |
|---|------------------------|
| Panel Mount Kit | AFL2PK-W21A |
| Wall Mounting Kit | AFLWK-19B |
| Stand | STAND-A21-R10 |
| ARM | ARM-31-RS |
| Slim DVD Burner Installation Kit (Including SATA Cable) | AFL2-DVD-KIT01-R10 |
| Hybrid Card Reader (MSI only for AFL2-W21AB series) | AFL2P-21AMSI-U-R10 |
| Magnetic Stripe Reader | AFL2P-21AMSR-U-R10 |
| Bluetooth Module Kit | AFL2-BT-KIT01-R11 |
| Trusted Platform Module (TPM) | TPM-IN01-R11 |
| EM RFID Reader | AFL2-EM-RFID-KIT01-R10 |
| Mifare RFID Reader | AFL2-MF-RFID-KIT01-R11 |
| OS: Windows® XP Embedded (CD-ROM) | AFL2-W21-H61-XPE-R10 |
| OS: Debian Linux (CD-ROM) | AFL2-W21-H61-LNX-R10 |
| OS: Windows® Embedded Standard 7 (DVD-ROM) | AFL2-W21-H61-WES7P-R10 |
| Temperature Sensor Cable | 32133-004300-100-RS |

Packing List

| Item | P/N | Q'ty | Description |
|----------------------------|---------------------|------|--|
| Utility CD | 7B000-000952-RS | 1 | drivers and user manual |
| One Key Recovery CD | 7B000-000781-RS | 1 | |
| Power Adapter | 63000-FSP120AAB-RS | 1 | FSP120-AAB ; 90~264VAC input ; 120W ; 19VAC output |
| Power Cord | 32702-000401-100-RS | 1 | European, 1500mm |
| Power Transfer Cord | 32000-089400-RS | 1 | |
| Infrared Remote Controller | 7Z000-SLPCB005-RS | 1 | |
| M3 Screw Pack | 44013-030041-RS | 4 | M3 x 4 for securing HDD |
| M4 Screw Pack | 44033-040061-RS | 4 | M4 x 4 for VESA screw |

Ordering Information

| LED Bar | Model | Description |
|-----------------|--------------------------|--|
| LED Bar | AFL2-W21A-H61-I5/PC-R10 | 21.5" 250cd/m² FHD panel PC, Core i5 Dual Core 2xxxT CPU (Above 2.7GHz), TDP 35W, 4GB DDR3 (2GB x 2), 802.11b/g/n wireless module, projected capacitive touchscreen, 2M camera, microphone, R10 |
| | AFL2-W21A-H61-I3/PC-R10 | 21.5" 250cd/m² FHD panel PC, Core i3 Dual Core 2xxxT CPU (Above 2.5GHz), TDP 35W, 4GB DDR3 (2GB x 2), 802.11b/g/n wireless module, projected capacitive touchscreen, 2M camera, microphone, R10 |
| | AFL2-W21A-H61-P/PC-R10 | 21.5" 250cd/m² FHD panel PC, Pentium Dual Core G6xxT CPU (Above 2.2GHz), TDP 35W, 4GB DDR3 (2GB x 2), 802.11b/g/n wireless module, projected capacitive touchscreen, 2M camera, microphone, R10 |
| Without LED Bar | AFL2-W21AB-H61-I5/PC-R10 | 21.5" 250cd/m² FHD panel PC, Core i5 Dual Core 2xxxT CPU (Above 2.7GHz), TDP 35W, 4GB DDR3 (2GB x 2), 802.11b/g/n wireless module, projected capacitive touchscreen, 2M camera, microphone, without LED bar, R10 |
| | AFL2-W21AB-H61-I3/PC-R10 | 21.5" 250cd/m² FHD panel PC, Core i3 Dual Core 2xxxT CPU (Above 2.5GHz), TDP 35W, 4GB DDR3 (2GB x 2), 802.11b/g/n wireless module, projected capacitive touchscreen, 2M camera, microphone, without LED bar, R10 |
| | AFL2-W21AB-H61-P/PC-R10 | 21.5" 250cd/m² FHD panel PC, Pentium Dual Core G6xxT CPU (Above 2.2GHz), TDP 35W, 4GB DDR3 (2GB x 2), 802.11b/g/n wireless module, projected capacitive touchscreen, 2M camera, microphone, without LED bar, R10 |