

PICMG 1.3 Passive Backplane

Selection Guide

PAC series wall-mount chassis
4U/5U Rack-mount chassis
1U/2U Rack-mount chassis

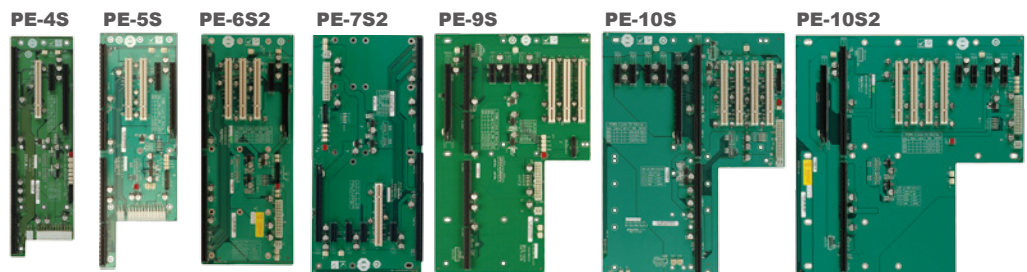
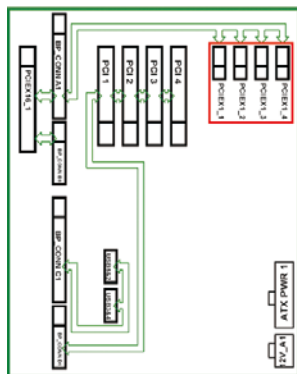
PICMG1.3 (PCIe+PCI)	Model	PE-2SD1	PE-2SD2	PE-4S	PE-4S2	PE-4S3	PE-5S	PE-5S2	PE-6S	PE-6S2	PE-6S3	PE-6SD	PE-6SD2	PE-6SD3
Total Slot		2	2	4	4	4	5	5	6	6	6	5	5	5
Expansion Slots	PCIe Slots	x16 *	1	1	1	1	1	1	1	1	1	1	1	1
		x4		1			1		1	1				1
		x1						3	2		3	3	2	
	PCI-X Slots		1	1	2		2		2	3	1		1	2
USB Connectors by Pin Header		4	4	4	4	4	4	4	4	4	4	4	4	4
PSU TYPE		24+4 PIN ATX	24+4 PIN ATX	24+4 PIN ATX	24+4 PIN ATX	24+4 PIN ATX	24+4 PIN ATX	24+4 PIN ATX	24+4 PIN ATX	24+4 PIN ATX	24+4 PIN ATX	24+4 PIN ATX	24+4 PIN ATX	24+4 PIN ATX
Chassis		RACK-1150-PE RACP-1151-PE	RACK-1150-PE RACP-1151-PE	N/A	N/A	N/A	RACK-500G	RACK-500G	RACK-305G RACK-360G RACK-3000G PAC-1700G PAC-125	PAC-106G x 1 PAC-107G x 1 PAC-1000G	PAC-106G x 1 PAC-107G x 1 PAC-1000G	N/A	N/A	N/A
Note		1U Type	1U Type									2U Type	2U Type	2U Type

PICMG1.3 (PCIe+PCI)	Model	PE-7S	PE-7S2	PE-8S	PE-9S	PE-10S	PE-10S2	PE-13SD	PE-16SQ	PXE-12S	PXE-13S	PXE-19S	PXE-19S2
Total Slot		7	7	8	9	10	10	13	16	12	13	19	19
Expansion Slots	PCIe Slots	x16 *	1	1	1	1	1	1/1	1/1/1/1	1	1	1	1
		x4						1/0	1/1/1/1				
		x1	2	4	3	4	4	0/4	0		3	1	1
	PCI-X Slots									6			
USB Connectors by Pin Header		4	4	4	4	4	4	8	4/4/4/4	4	4	4	4
PSU TYPE		24+4 PIN ATX	24+4 PIN ATX	24+4 PIN ATX	24+4 PIN ATX	24+4 PIN ATX	24+4 PIN ATX	Dual 24+4 PIN ATX	Three 20+4 Pin ATX One 24+4-pin ATX	24+4 PIN ATX	24+4 PIN ATX	24+4 PIN ATX	24+4 PIN ATX
Chassis		PAC-1700G	PAC-1700G	PAC-125G	N/A	RACK-305G RACK-360G RACK-3000G	RACK-3000G RACK-305G RACK-360G	RACK-3000G RACK-305G RACK-360G	N/A	RACK-3000G RACK-305G RACK-360G	RACK-3000G RACK-305G RACK-360G	N/A	N/A
Note								Dual System Backplane	Quad System Backplane	PCIe to PCI-X Bridge backplane	PCIe to PCI Bridge backplane		

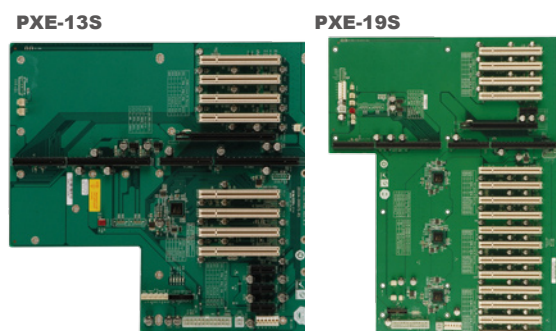
*When using a PCIe x16 add-on card, the length of the card must not exceed 167mm or 6.57 inches.

IEI Graphic Grade Backplane Solution

Graphic centric backplane targets applications which concern system speed and performance. It has higher performance over cost ratio than the previous PICMG1.0 solution.

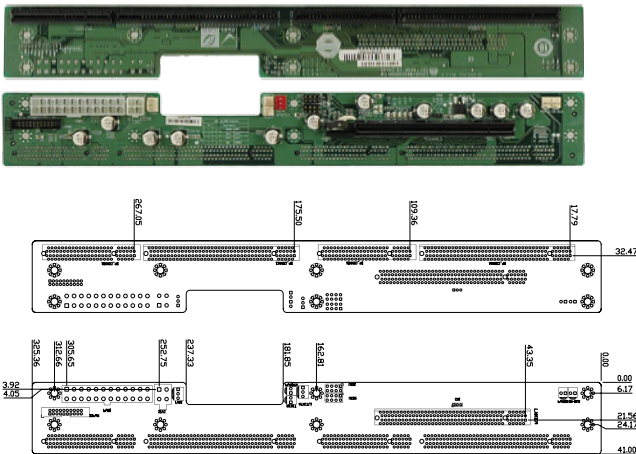


- Twenty PCIe lanes total
- One PCIe x16 slot
- Up to four PCIe x1 or One PCIe x4 slot
- Up to four local PCI slots (w/o bridge)



- Twenty PCIe lanes total
- One PCIe x16 slot
- Up to four PCIe x1 slots
- PCI slots expandable via PCIe to PCI bridge

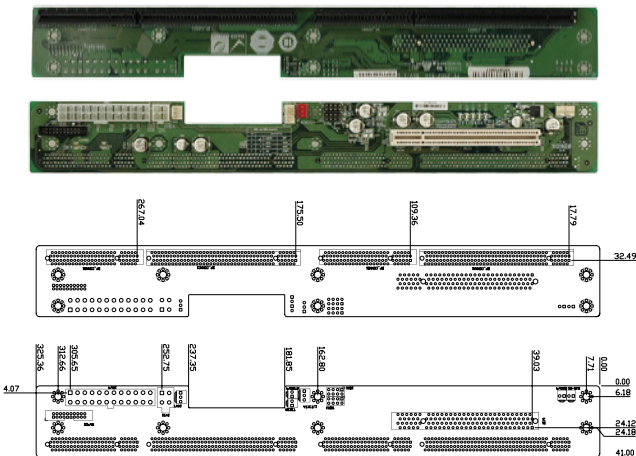
PE-2SD1-R10

For 1U
system!

Ordering Information

- PE-2SD1-R10 2-slot backplane with one PCIe slot
- RACK-1150G-PE 1U full-size rack-mount chassis

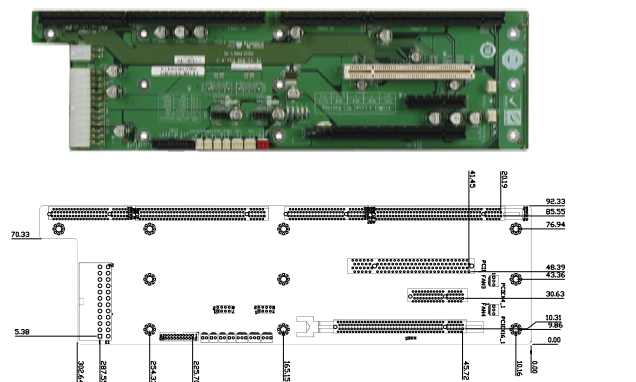
PE-2SD2-R10

For 1U
system!

Ordering Information

- PE-2SD2-R10 2-slot backplane with one PCIe slot
- RACK-1150G-PE 1U full-size rack-mount chassis

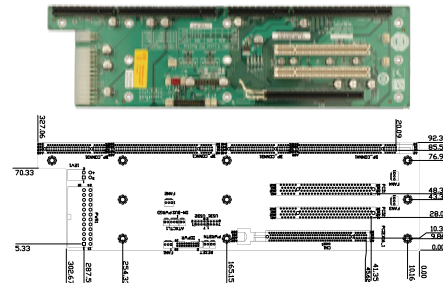
PE-4S-R40

Mounting holes
compatible with PCI-4S

Ordering Information

- PE-4S-R40 4-slot backplane with one PCIe x16 slot, one PCIe x4 slot and one PCI slot

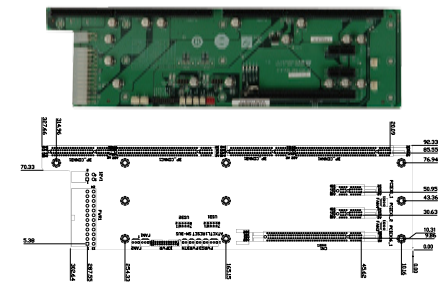
PE-4S2-R40

Mounting holes
compatible with PCI-4S

Ordering Information

- PE-4S2-R40 4-slot backplane with one PCIe x16 slot and two PCI slots

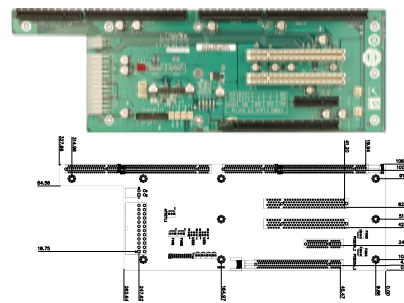
PE-4S3-R40

Mounting holes
compatible with PCI-4S

Ordering Information

- PE-4S3-R40 4-slot backplane with one PCIe x16 slot and two PCIe x1 slots.

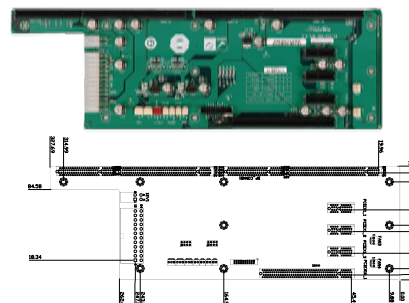
PE-5S-R40

Mounting holes
compatible with PCI-5S

Ordering Information

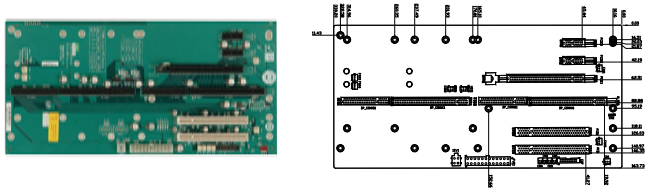
- PE-5S-R40 5-slot backplane with one PCIe x16 slot, one PCIe x4 slot and two PCI slots
- RACK-500G 5U 5-slot full-size rack-mount chassis

PE-5S2-R40

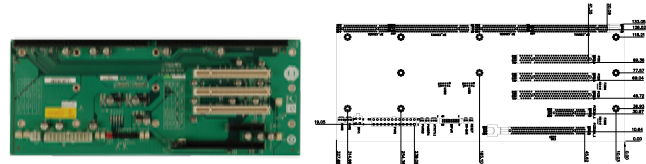
Mounting holes
compatible with PCI-5S

Ordering Information

- PE-5S2-R40 5-slot backplane with one PCIe x16 slot and three PCIe x1 slots
- RACK-500G 5U 5-slot full-size rack-mount chassis

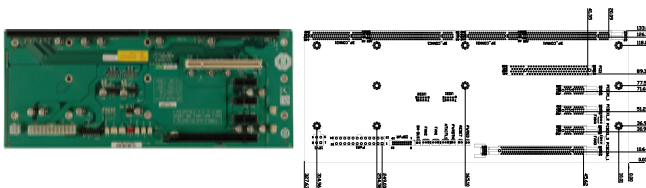
PE-6S-R41Mounting holes
compatible with PCI-7S**Ordering Information**

- PE-6S-R41 6-slot backplane with one PCIe x16 slot, two PCIe x1 slots and two PCI slots
- RACK-305G 4U 14-slot full-size rack-mount chassis
- RACK-360G 4U 14-slot full-size rack-mount chassis
- RACK-3000G 4U 14-slot full-size rack-mount chassis
- PAC-1700G 7-slot full-size compact chassis
- PAC-125G 10-slot full-size compact chassis

PE-6S2-R40Mounting holes
compatible with PCI-6S**Ordering Information**

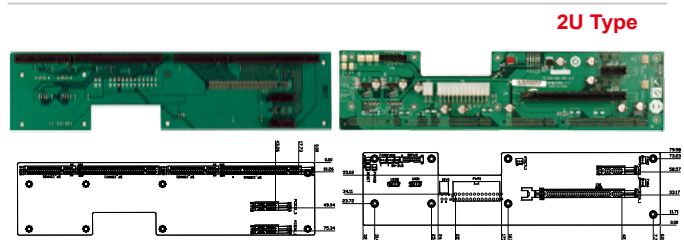
- PE-6S2-R40 6-slot backplane with one PCIe x16 slot, one PCIe x4 slot and three PCI slots
- PAC-106G* 6-slot full-size compact chassis
- PAC-107G* 6-slot full-size compact chassis
- PAC-1000G 6-slot full-size compact chassis

* When using a PCIe x16 add-on card, the length of the card must not exceed 167mm or 6.57inches.

PE-6S3-R40Mounting holes
compatible with PCI-6S**Ordering Information**

- PE-6S3-R40 6-slot backplane with one PCIe x16 slot, three PCIe x1 slots and one PCI slot
- PAC-106G* 6-slot full-size compact chassis
- PAC-107G* 6-slot full-size compact chassis
- PAC-1000G 6-slot full-size compact chassis

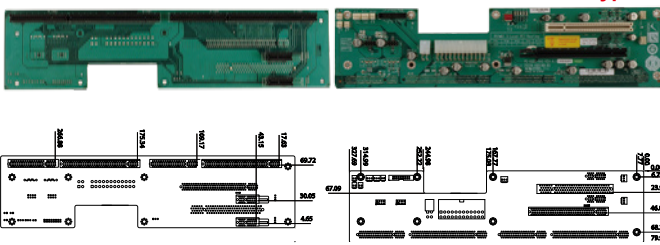
* When using a PCIe x16 add-on card, the length of the card must not exceed 167mm or 6.57inches.

PE-6SD-R40Mounting holes
compatible with PCI-6SD**Ordering Information**

- PE-6SD-R40 5-slot backplane with one PCIe x16 slot and three PCIe x1 slots

PE-6SD2-R40Mounting holes
compatible with PCI-6SD

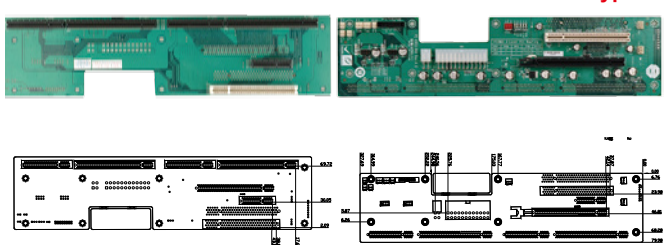
2U Type

**Ordering Information**

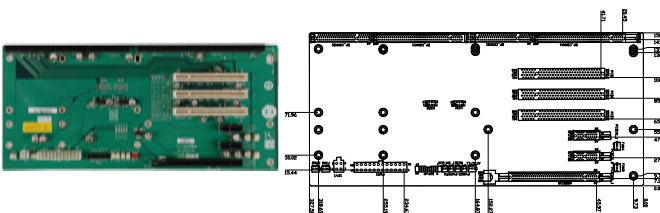
- PE-6SD2-R40 5-slot backplane with one PCIe x16 slot, two PCIe x1 slots and one PCI slot

PE-6SD3-R40Mounting holes
compatible with PCI-6SD

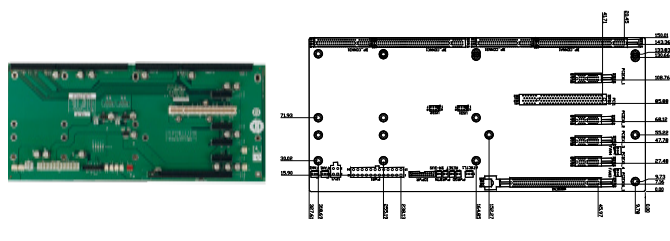
2U Type

**Ordering Information**

- PE-6SD3-R40 5-slot backplane with one PCIe x16 slot, one PCIe x4 slot and two PCI slots

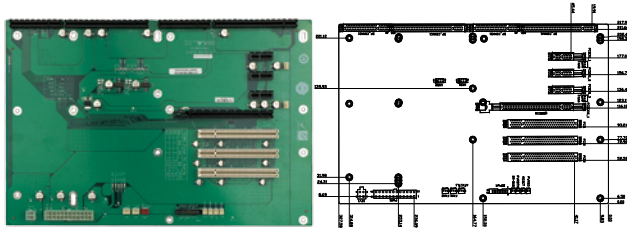
PE-7S-R40Mounting holes
compatible with PCI-7S**Ordering Information**

- PE-7S-R40 7-slot backplane with one PCIe x16 slot, two PCIe x1 slots and three PCI slots
- PAC-1700G 7-slot full-size compact chassis

PE-7S2-R40Mounting holes
compatible with PCI-7S**Ordering Information**

- PE-7S2-R40 7-slot backplane with one PCIe x16 slot and four PCIe x1 slots and one PCI slot
- PAC-1700G 7-slot full-size compact chassis

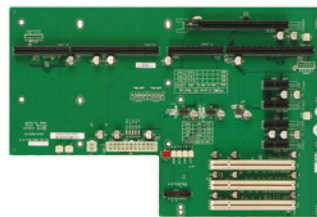
PE-8S-R40



Ordering Information

- PE-8S-R40 8-slot backplane with one PCIe x16 slots, three PCIe x1 slots and three PCI slots
- PAC-125G 10-slot full-size compact chassis

PE-9S-R40



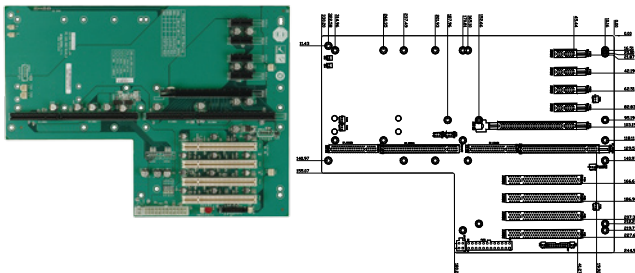
Mounting holes
compatible with PCI-10S2

Ordering Information

- PE-9S-R40 9-slot backplane with one PCIe x16 slot, four PCIe x1 slots and three PCI slots

PE-10S-R40

Mounting holes
compatible with PCI-14S

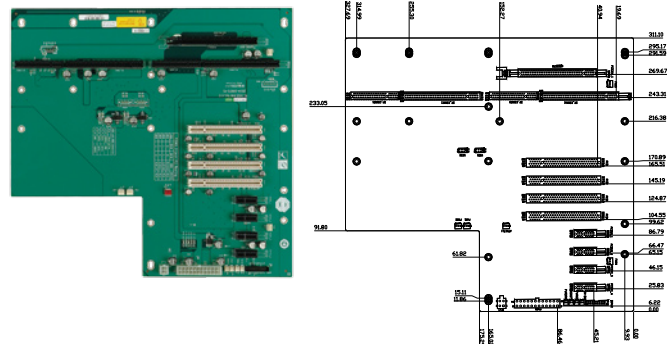


Ordering Information

- PE-10S-R40 10-slot backplane with one PCIe x16 slots four PCIe x1 slots and four PCI slots
- RACK-305G 4U 14-slot full-size rack-mount chassis
- RACK-360G 4U 14-slot full-size rack-mount chassis
- RACK-3000G 4U 14-slot full-size rack-mount chassis

PE-10S2-R40

Mounting holes
compatible with PCI-14S



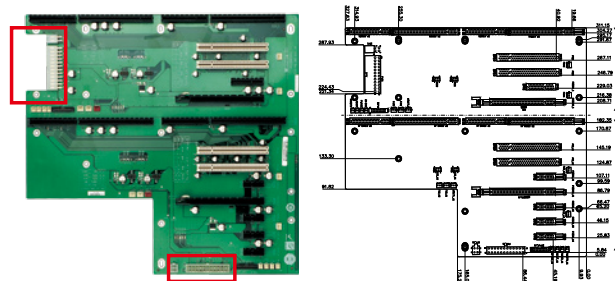
Ordering Information

- PE-10S2-R40 10-slot backplane with one PCIe x16 slot, four PCIe x1 slot and four PCI slots
- RACK-3000G 4U 14-slot full-size rack-mount chassis
- RACK-305G0 4U 14-slot full-size rack-mount chassis
- RACK-360G 4U 14-slot full-size rack-mount chassis

PE-13SD-R40

Mounting holes
compatible with PCI-14S

Dual system



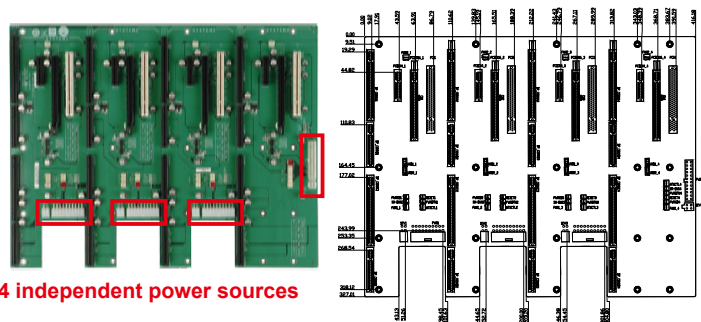
2 independent power resources

Ordering Information

- PE-13SD-R40 13-slot backplane with two PCIe x 16 and one PCIe x 4 and four PCIe x 1 and four PCI slot.
- RACK-3000G 4U 14-slot full-size rack-mount chassis
- RACK-305G 4U 14-slot full-size rack-mount chassis
- RACK-360G 4U 14-slot full-size rack-mount chassis

PE-16SQ-R10

Quad system



4 independent power sources

Ordering Information

- PE-16SQ-R10 4-system backplane with each system having one PCIe x16 slot, one PCIe x4 slot and one PCI slot

